

Office to let

George Enescu Office Building

Bucharest, Sector 1, George Enescu Street, No.11



Building information

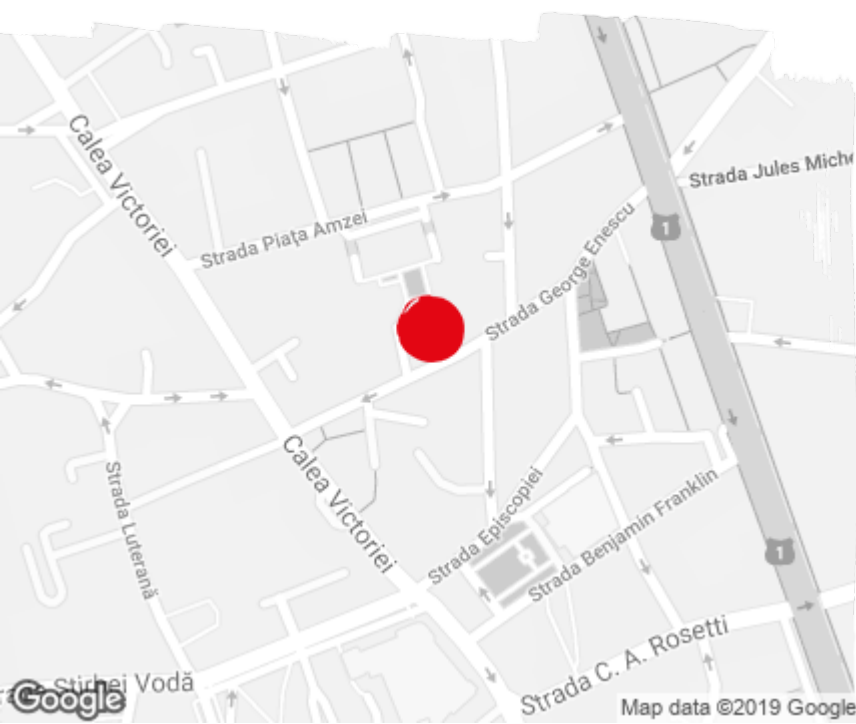
Building status	Existing
Year of construction	2016
Parking ratio	1 / 70 sq m
Total building area	10 453 sq m

Commercial terms

Office space*	after login *
Parking	after login *
Service charge*	after login *
Minimum lease term	after login *
Availability	after login *

* Asking terms for m²/month

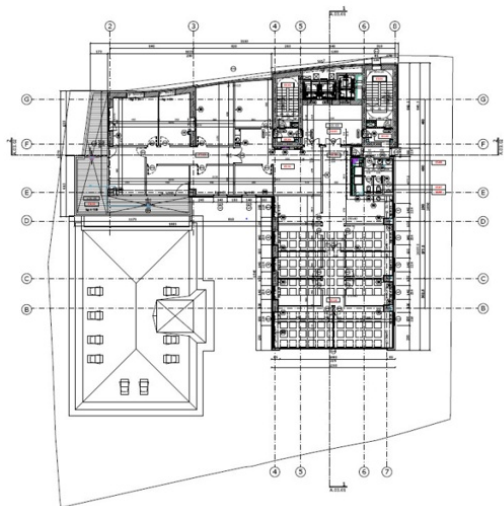
Location



Available space

Building completely leased

Typical floor plan



Public transport

Metro: M1

Bus: 126,368

Contact



+40 21 302 3400

More information